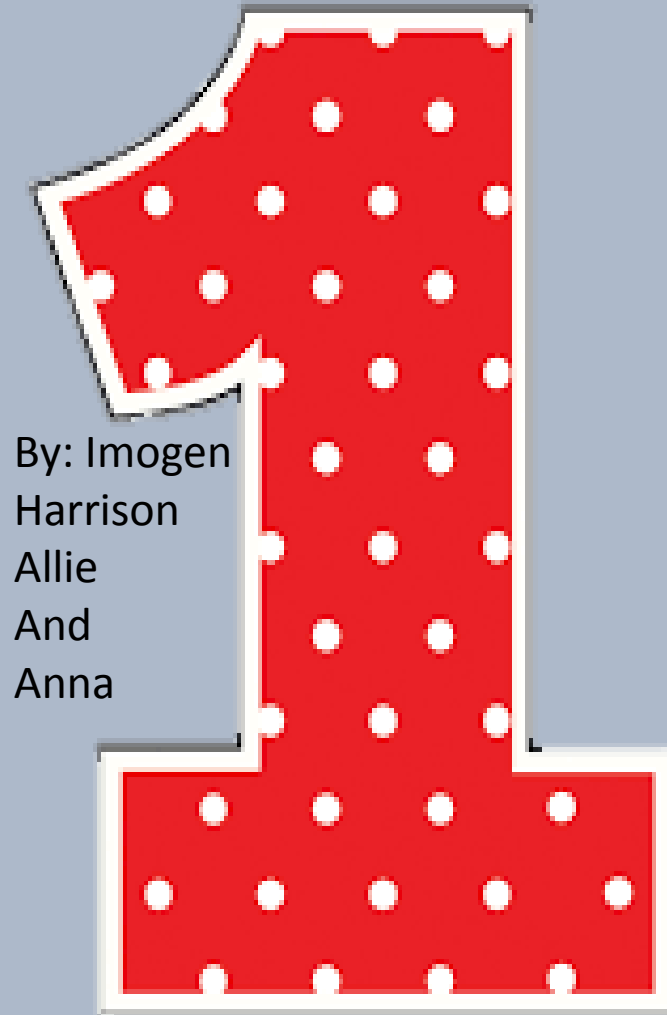


# 7S3/Cp Environmental Action Plan

7 steps to help save the planet for all citizens!



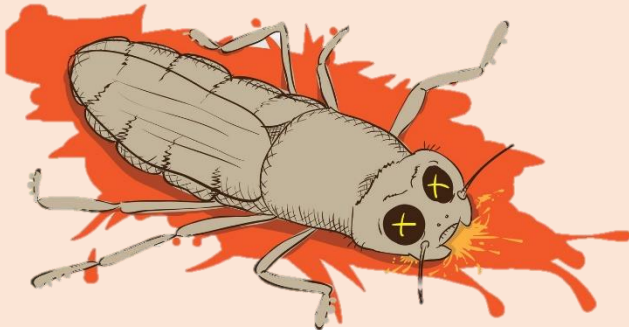


By: Imogen  
Harrison  
Allie  
And  
Anna

# Issues for insects

We need to protect our insects as they help our soil to be fertile and plants to grow. We need to help them have safe habitats.

- If something fell it could crush the bugs.
- They could be stood on.
- They can easily get stuck in water and need somewhere when it is cold.



# How Could Families Help?

How could families help? Try making your very own bug boxes/hotels! Make our bug environment grow again!

You don't know that bugs do so much for you, especially bees! They make honey for you, pollenate flowers, they also eat things that are bad for you, what sweethearts!



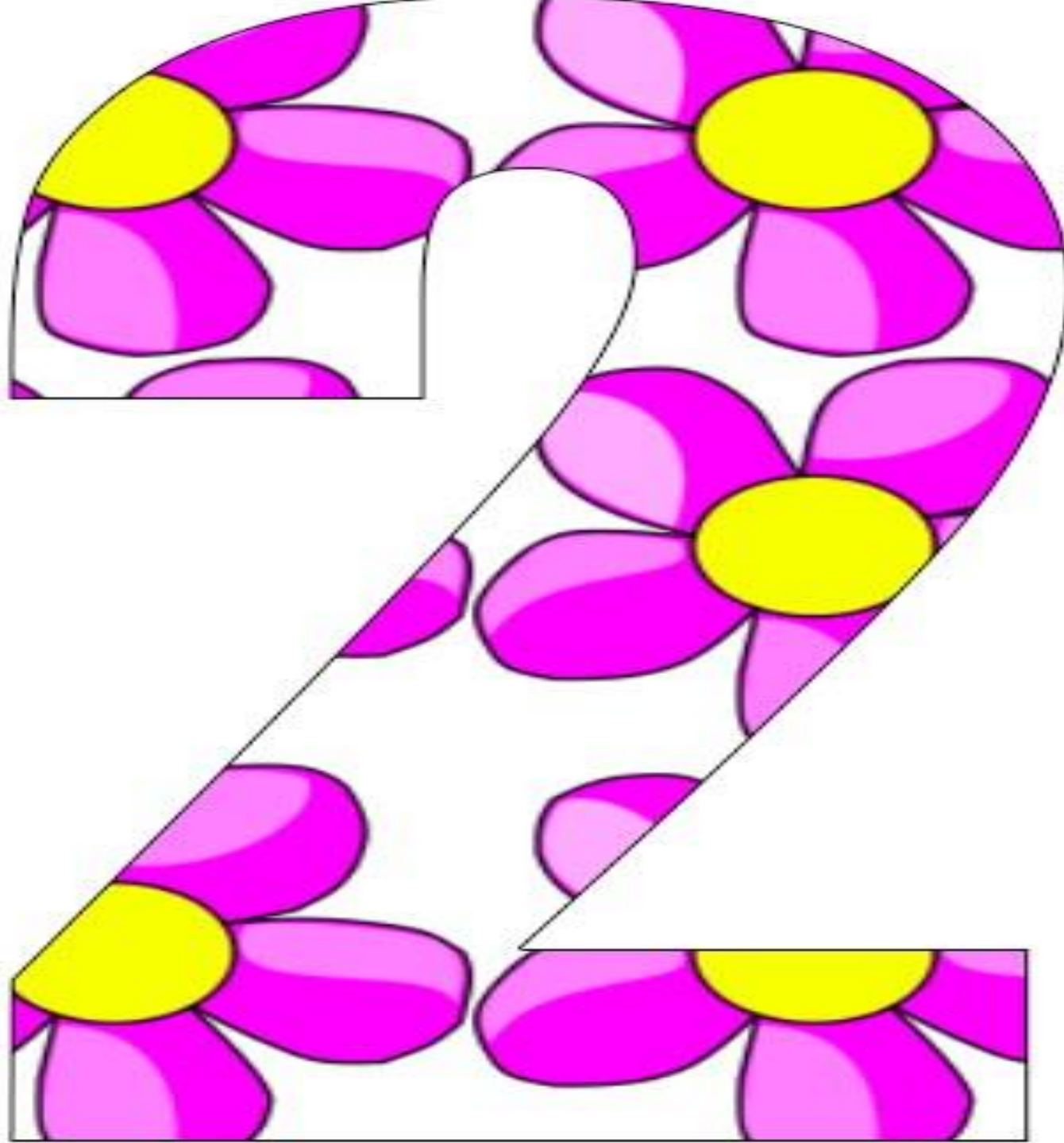
# How to make a bug box!

How to make your very own bug box!

1. Choose a good spot for your insect home.
2. Create a structure with pallets.
3. Fill in the gaps with other materials.

See? It's that easy! When you fill in the gaps with the materials, make sure it attracts different bugs to your bug box! Like. Pieces of wood, leaves and flowers etc!







# WHAT IS THE ISSUE WITH POLLINATING PLANTS?



KEEP  
CALM  
AND  
SAVE  
BEEES

Plants need us  
insects in  
order to  
survive!



80% of  
European wild  
flowers require  
insect  
pollination.

About  
40% of  
the 30  
million or  
so insect  
species on  
earth are  
now  
threatened  
with  
extinction.



Examples of  
plants that need  
pollinators:  
✓ Butterfly bush  
✓ Foxglove  
✓ Clovers  
✓ Vetches

# What simple actions can we do?

## What plants attract bees?

- Some plants that we can plant to help pollination are:
- Foxglove
- bistort
- Clovers[trifolium species]
- borage
- Agastache
- chives
- Allium



YOU CAN HELP  
BY PLANTING  
SOME OF  
THESE PLANTS.

## What insects pollinate plants?

Some of the insects that pollinate plants are:

- Butterfly
- flies
- Bees
- wasps
- Moths
- thrips



DO NOT KILL OR  
PICK ANY  
PLANTS OR  
INSECTS.



By Bude  
Hill

3.

By Sam  
Heyden

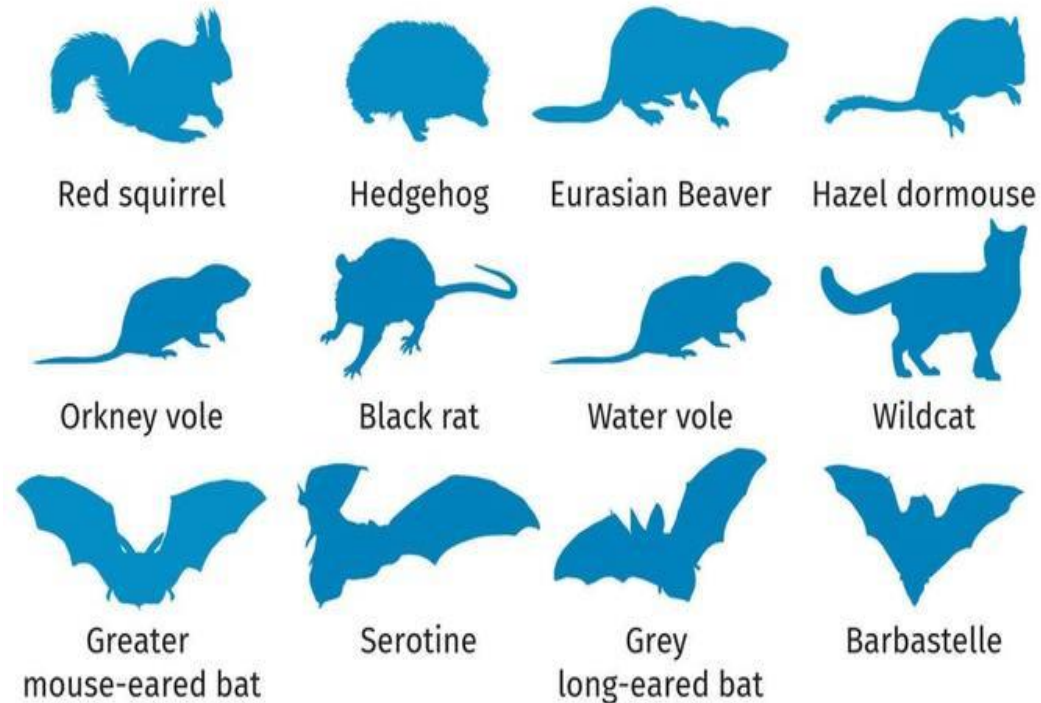
By Sarah  
Jones

By Catherine  
Wilson



# The issue is that there are not enough wild patches!

## British mammals threatened with extinction



Source: Mammal Society/Natural England



## Wild patches

In the time it takes you to read this page, one of our planet's unique species will become extinct. By this time tomorrow, a further 150–200 will have disappeared forever. And by this time next year, over 50,000 more.

### Causes of habitat loss:

- Unsustainable trade
- Poaching
- By catch
- Climate change
- Invasive species
- Pollution
- Human-animal conflicts



# Keep animals alive!

If you already have a lot of grass let it grow long! Let nature move into your garden! The nature will just come naturally so let it, set aside some lawn leaving it to grow and wait to see what arrives. The patch should be the same size as the picture, even a meter squared is good!

Also consider having a small pond with a little ramp for animals to drink from or live in.



4



# Water conservation

*Water conservation means using our limited water supply wisely and caring for it properly. Since each of us depends on water to sustain life, it is our responsibility to learn more about water conservation and how we can help keep our sources pure and safe for generations to come. Reducing our water usages reduces the energy required to process and deliver it to homes, businesses, farms, and communities, which, in turn, helps to reduce pollution and conserve fuel resources. the supply we have stays constant. quantity and quality. By reducing the amount of water we use, we can better protect against future drought years.*



# *How can we conserve water?*

**Install Water-Saving Showerheads, Shower Timers, and Low-Flow Faucet Aerators for toilets.**

**Inexpensive water-saving low-flow showerheads or restrictors are easy for the homeowner to install. Long showers can use five to ten gallons every unneeded minute. “Low-flow” means it uses less than 2.5 gallons per minute. You can easily install a Shower Start, or add a Shower Start converter to existing showerheads, which automatically pauses a running shower once it gets warm.**

**Take Shorter Showers and turn off water taps when brushing teeth.**

**One way to cut down on water use is to turn off the shower after soaping up, then turn it back on to rinse. A four-minute shower uses approximately 20 to 40 gallons of water. You can also install a simple shower timer, available from Earth easy or your local water utility.**



5

Ethan burgess & Noah Atkins

The future is electric. All the fossil fuels we use are destroying the O-zone layer and are causing our atmosphere to corrupt. To fix this we need to take some steps forward and head for a greener society.

two steps to stay energy efficient:

- 1: Watch your energy consumption
- 2: Consider solar panels

We are destroying our planet. We need to find a new way to use energy in a more safer way

Energy in the United Kingdom stands at stood at 2,249 MWh (193.4 million tonnes of oil equivalent) in 2014. This equates to energy consumption per capita of 34.82 MWh (3.00 tonnes of oil equivalent) compared to a 2010 world average of 21.54 MWh (1.85 tonnes

#### ENERGY SAVING TIPS



SWITCH OFF



UNPLUG IT



SAVE POWER



## Why to conserve energy ?

- We have limited fuels available on earth.
- Our demand for energy is increasing day-by-day.
- It is possible that someday, most of fuels will be exhausted, and we will have to switch over to alternate energy

## Ways To Conserve Energy

1. Replace your light bulbs.
2. Purchase energy efficient appliances.
3. Use smaller kitchen appliances whenever possible. Microwaves, toaster ovens and slow-cookers can use 75 percent less energy than a large electric oven.



Recycling by Ava, Rosa, Tia and Iesa

6



A stylized illustration of the Earth, showing continents in green and oceans in blue. A hand is shown holding a red heart over the top of the globe, symbolizing care and environmental protection.

## *What's happening now?*

- Right now the earth is slowly dying, there is so much we can do but not a lot of us care.
- Day by day we are all destroying the planet whether its using single use plastic or even throwing a small wrapper on the floor! In a way we are killing each other.
- All the plastic that we use is just being washed away and killing millions of millions of animals.





## *What can we do to stop it ?*

- **Everyone at home can stop our world from falling apart by recycling.**
- **In general, you can recycle paper, plastic, metal, and glass. But in some communities there may be different recycling policies. Most metallic items in the home can be recycled, such as empty spray cans and tin foil, and of course, all empty soda, fruit, vegetable and other food cans.**



# Air Pollution

- Air pollution occurs when harmful or excessive quantities of substances including gases, particles, and biological molecules are introduced into Earth's atmosphere.
- Emissions from cars increase the levels of carbon dioxide and other greenhouse gases in the atmosphere. ... Big trucks, bulldozers, ships and boats, trains and even snowblowers pollute the air. According to the EPA, motor vehicles collectively cause 75 percent of carbon monoxide pollution in the U.S.

# How Can We Help Prevent Air Pollution?

- Travel to work or school on a bicycle or by walking
- Reduce or eliminate fireplace and wood stove use
- Avoid burning leaves, trash, and other materials
- Avoid using gas-powered lawn and garden equipment

