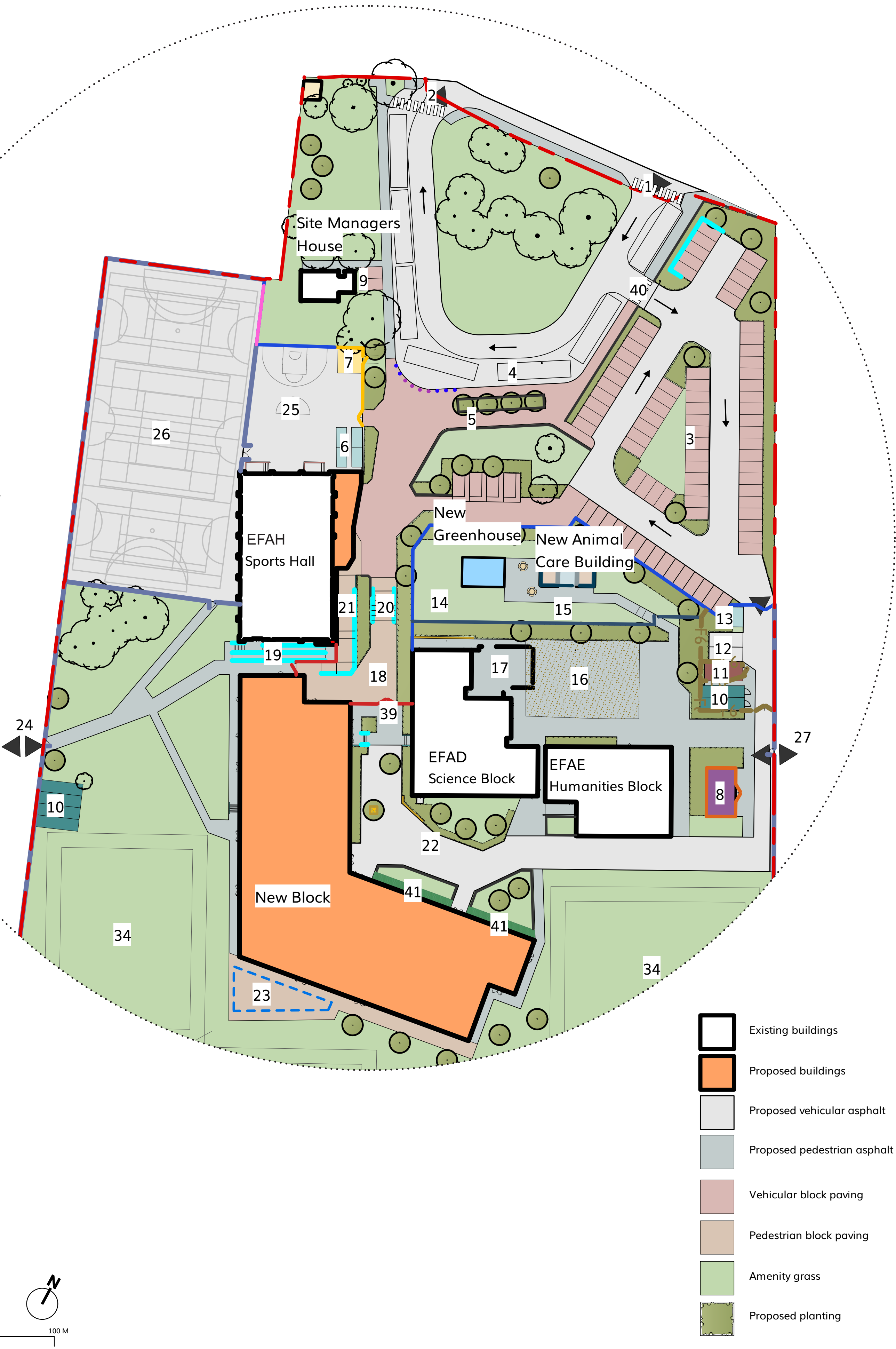


Key

- Existing vehicular access
- Existing vehicular egress
- New car park - 80 spaces & 4 DDA spaces
- Coach drop-off - 7 spaces
- Entrance plaza
- Proposed student cycle shelter - 40 spaces
- Proposed substation
- Proposed service compound with acoustic fence
- New car parking - 2 spaces
- New storage containers - 6 units
- New refuse store
- Minibus parking - 2 spaces
- Staff cycle shelter - 10 spaces
- Allotment garden
- Animal care space with runs and hutches
- Existing gravel area retained
- Space for future building extension
- New entrance paving
- New accessible sports hall access
- New steps
- New ramp with overhanging canopy
- New hard play courtyard
- New outdoor dining space with PV canopies
- Existing pedestrian access retained
- New hard play space
- Existing MUGA retained
- Existing pedestrian access retained
- Existing rugby pitch
- Relocated long jump, run up and pit
- Existing cricket nets
- Relocated cricket wicket
- Potential future relocation for cricket nets
- Existing training grids
- New mini football pitches
- Relocated running track
- Relocated Football pitch
- Relocated Football pitch
- Relocated rounders markings
- Fob access gates
- Manual car park barrier
- Reinforced grass system



Project Summary

Thomas Keble School (TKS) is a mixed gender secondary school located in Eastcombe, county of Gloucestershire.

The School caters for approx. 750 pupils. The school was awarded high performing specialist school status in 2006, enabling a second specialism in sport. Thomas Keble gained foundation school status in 2007 and the school was converted to academy status in August 2011. The site is bordered mainly by residential units and a public open green on the east side. The land sits within an area of outstanding natural beauty (AONB).

Set within the village of Eastcombe in the Cotswolds, the existing TKS site includes a series of individual, interconnected buildings, between one to three storeys high, in a campus style environment.

The vision for TKS is to develop a scheme that will consolidate currently disconnected spaces, into a single new school building, that is linked to the facilities (Sports Hall (EFAH), Science (EFAD) and Humanities (EFAE) that are being retained.

The new main school building and associated landscaping will not only replace facilities at the end of their life, but also provide the school with a strong and clear identity for the future.

The scheme comprises a mix of new build and refurbishment elements, as well as extensive improvements to the hard and soft landscaping, to meet the future needs and vision of the school, whilst also helping meet the Government's net zero target. The proposal includes for:

- Demolition of existing Laingspan/Intergrid structures which have reached end of life.
- The construction of a new three-storey teaching block to replace the demolished accommodation.
- An extension to the retained Sports Hall including sport equipment stores and entrance lobby for Community/After hours use.
- A new canopy between the new teaching block and the Sports hall, providing a link protected from the weather and enhance the prominence of the entrances for both buildings.
- Enhanced landscaping and carpark associated with the proposal.

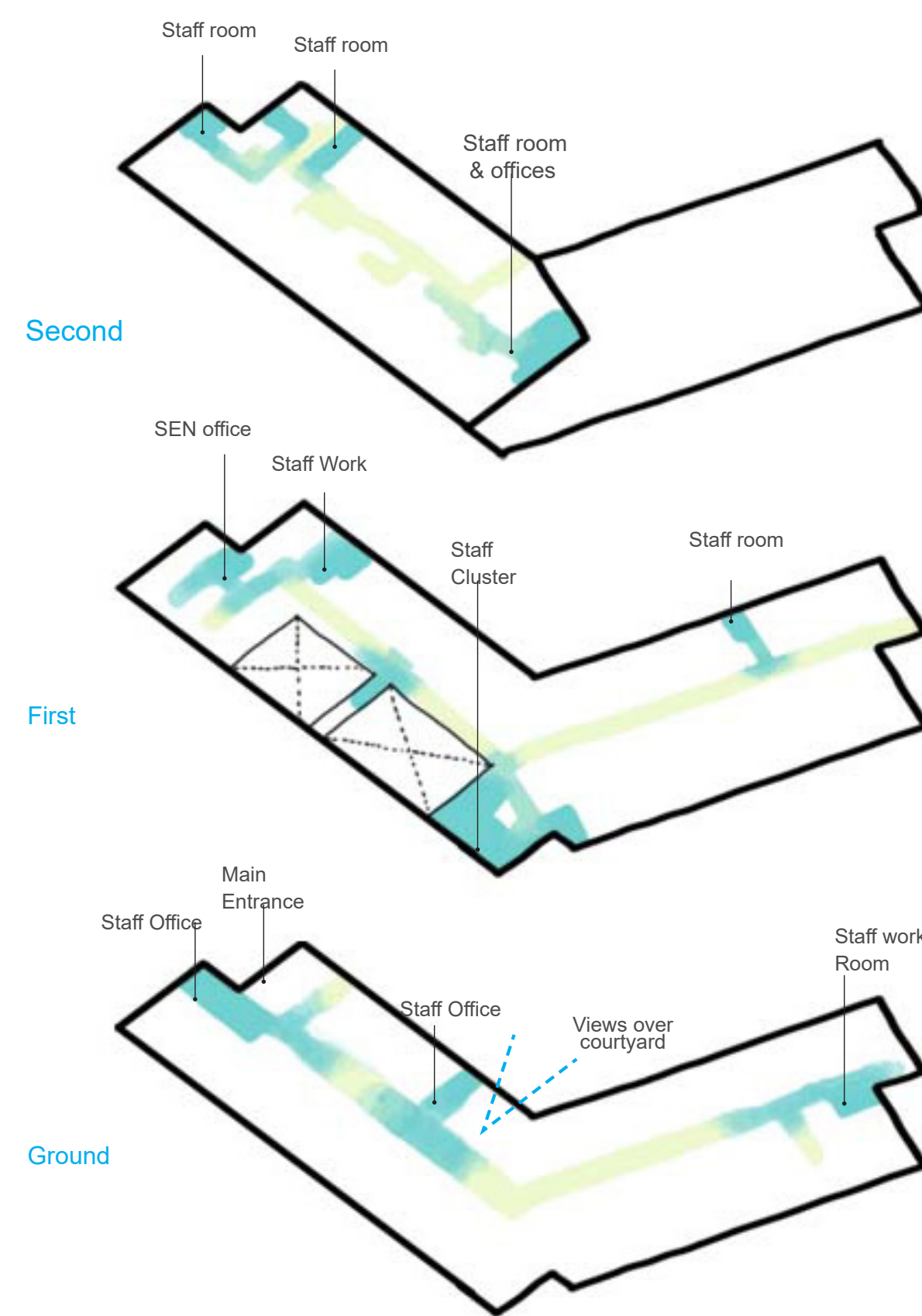
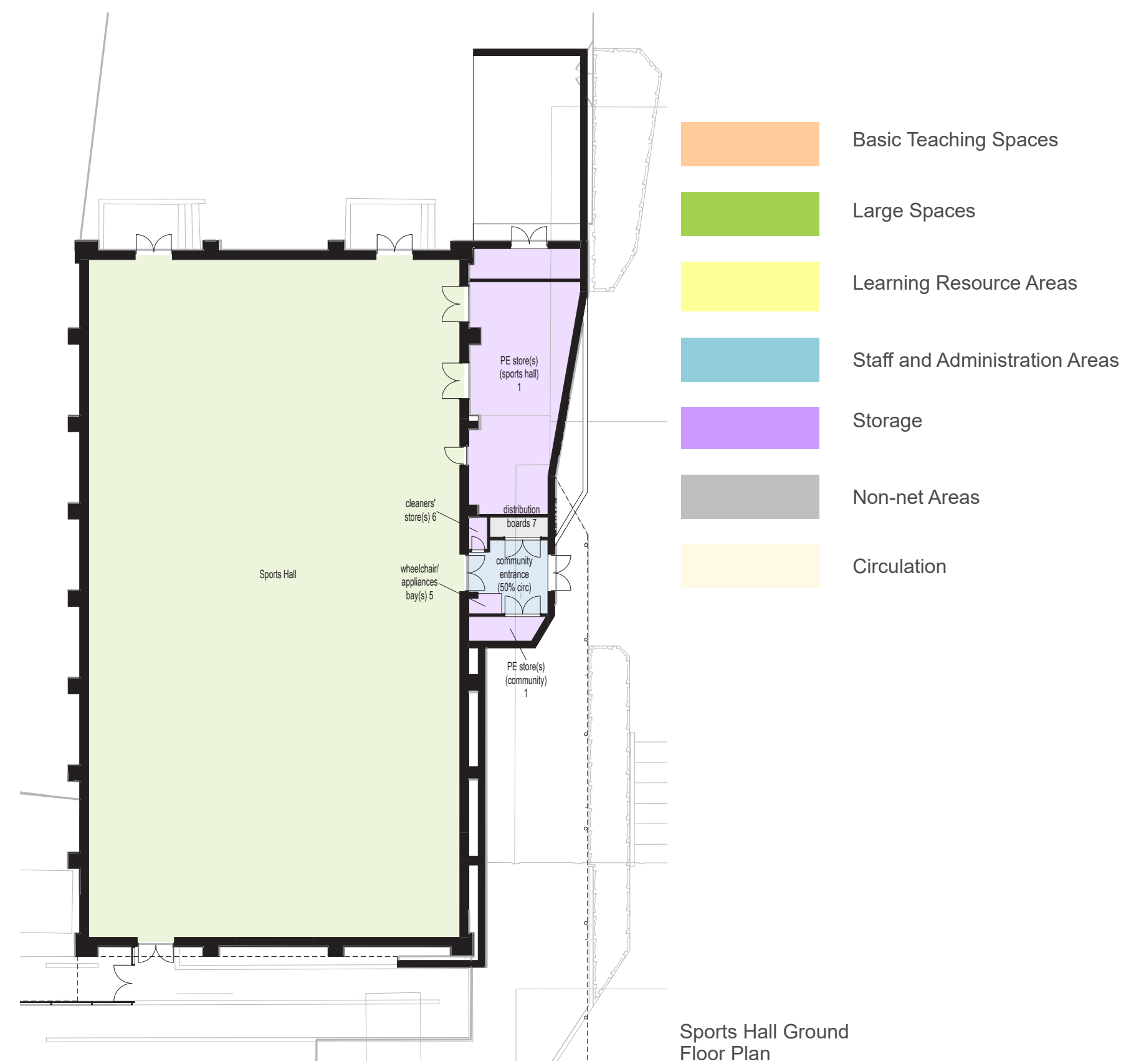
Design Development:

The project has been developed through engagement meetings between Thomas Keble School (TKS), the Department for Education (DfE) and the Design Team. As a result, it has produced a design that meets the requirements and vision of all parties.

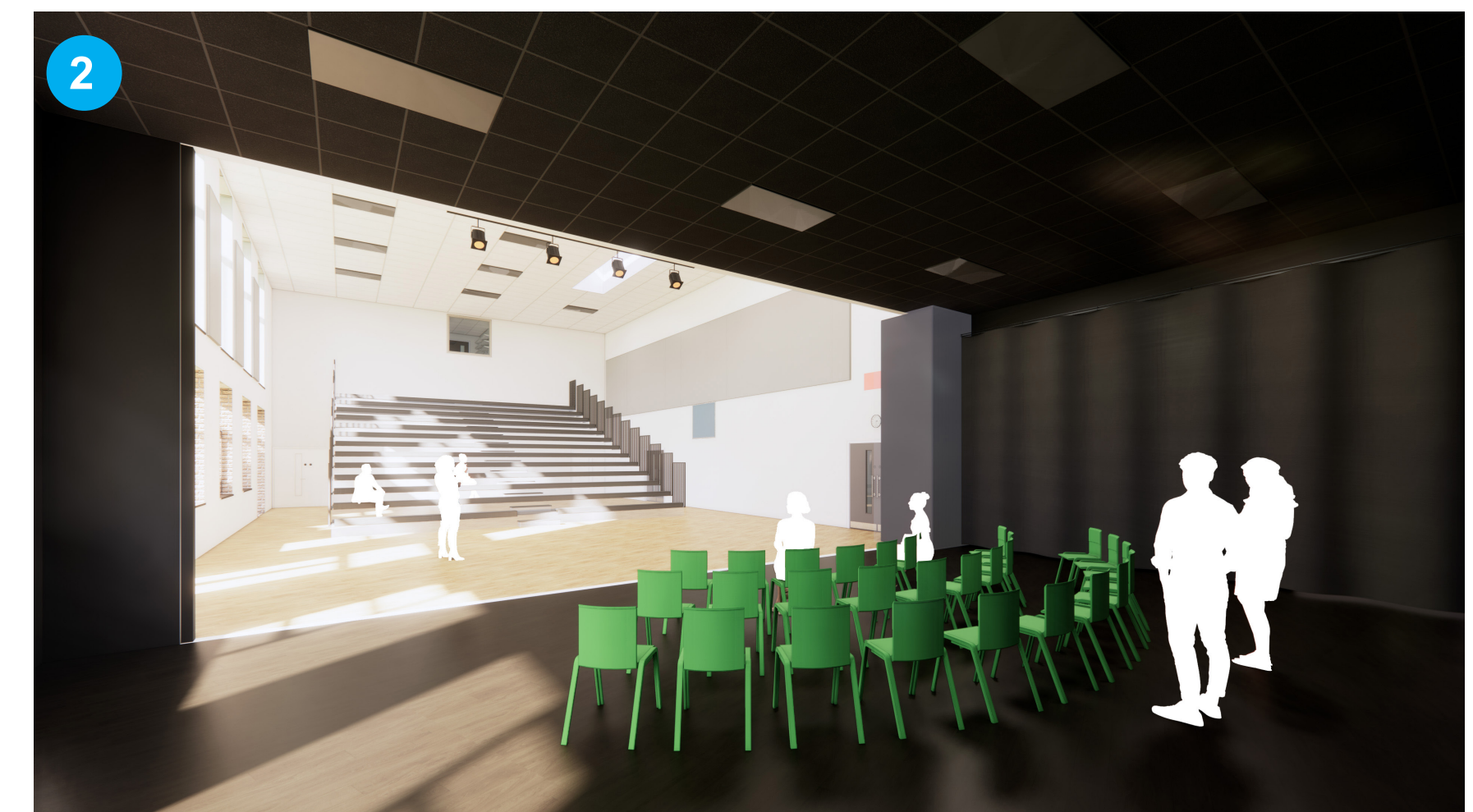
The overarching concept of the building has been developed through several key drivers:

- Add a clear secure line to the front of school.
- Reconfigure the pick-up / drop off area and bus lay-by to improve pupil safety and local traffic.
- Establish a new public front to the school through the provision of purpose-built facilities.
- Generous circulation areas within the building.
- Expand the vocational offering of the school in response to increasing demand from students.
- Retain the existing Sports Hall and create new activity studios and facilities, linked by new changing rooms. Sports facilities are heavily used by the community, hence are to be focused around the main entrance of the new building at ground floor level.
- Expand access to additional spaces within the school, including both vocational and general teaching classrooms, for use outside of school hours through the use of zoned letting areas.
- Create a flexible second large activity studio that can become dining area.
- Organize SEN provision as a cluster, with a link to animal care facilities and garden space.
- Group SEN spaces with LRC and art and graphics rooms on a single floor (1st floor) with general teaching grouped mainly at 2nd floor
- Provide a layout for an additional lab to expand science teaching provision.
- Provide external WCs to compensate for lack on WCs in retained buildings.
- Establish a strategy for potential future expansion of indoor spaces of PE.
- Reducing planning risk by developing the massing to provide some variation in height and relief in the overall form.
- Consideration of the phasing and construction disturbance of to the school and developing proposals that limit this and consider all the Key requirements.

Landscape Masterplan



CGI View of Activity Studio



CGI View of Proposed Drama Studio

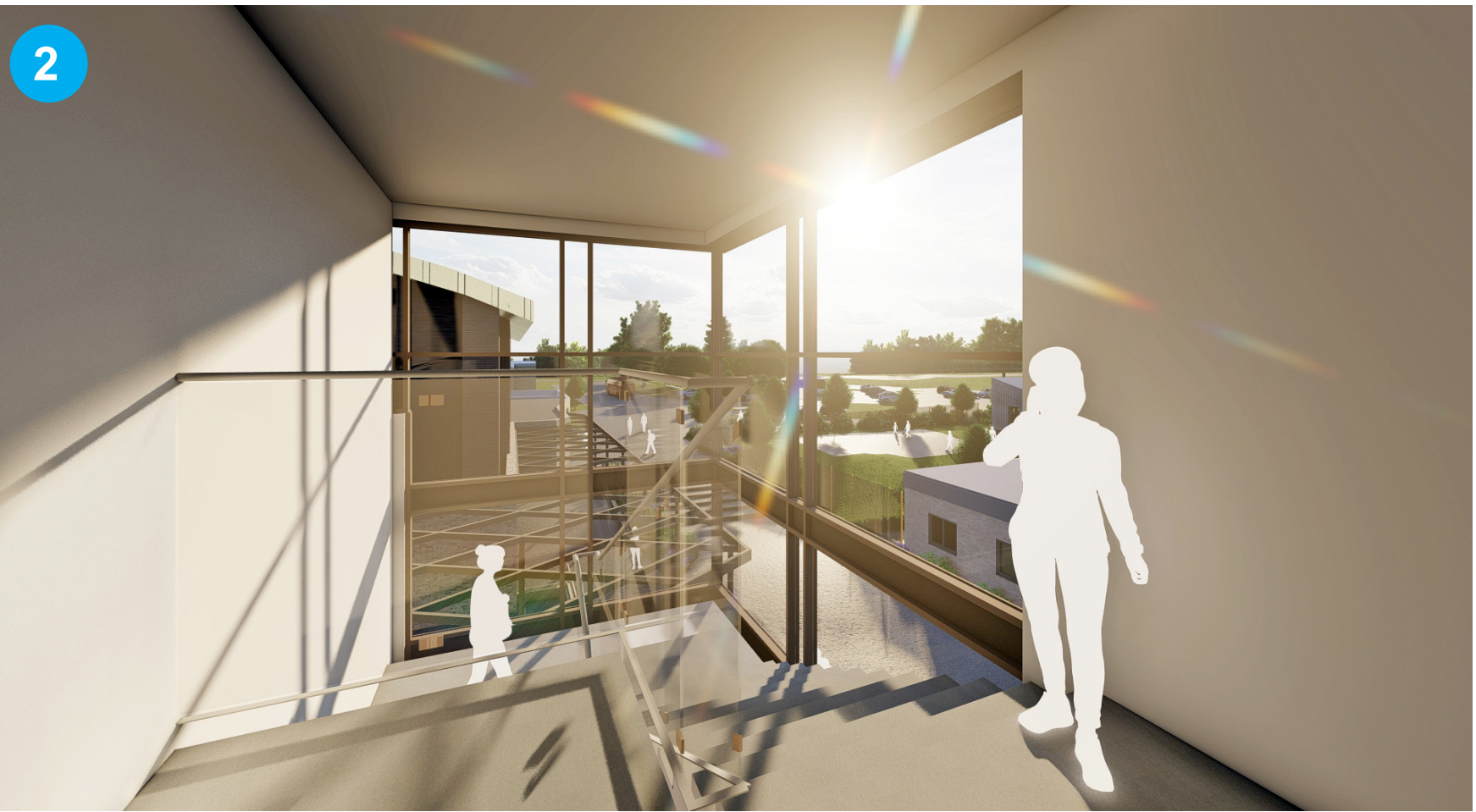


CGI View of Proposed Reception Area

Proposed Ground Floor Plan - Main Block



CGI View of SEN Cluster



CGI View of Stairs



CGI View of Proposed ICT Room

Proposed First & Second Floor Plan



Birds Eye View of SEN Garden

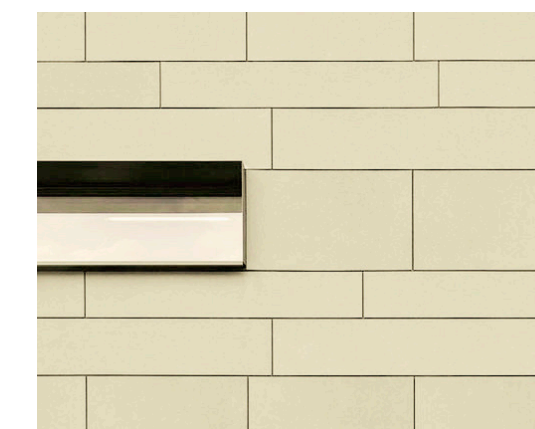


View of Proposed School Entrance

External Materials Palette



Buff / Grey Brick



Fibre Cement Cladding



Entrance Curtain Wall



Bronze Colour Window Frames



Standing Seam Metal Cladding



Proposed Main Block Entrance Approach



Proposed View from Drop off Point.

Proposed External Views